

Dual-lens PTZ thermal camera

EOS-971-TH625A33

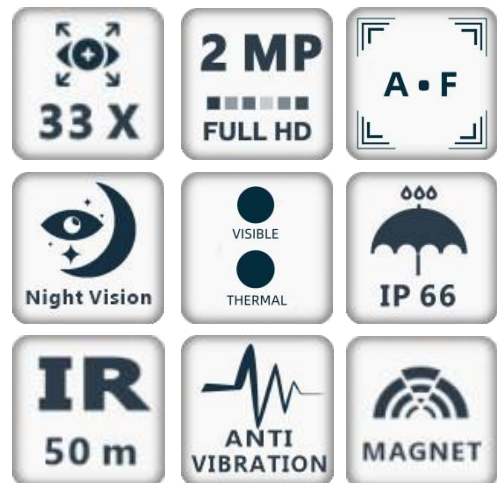
The EOS-971-TH series of dual-sensor PTZ cameras is a range of robust, vehicle-mounted PTZ cameras. The camera features a 33x HD day/night zoom and an uncooled thermal camera, enabling long-range surveillance both day and night.

Featuring an aluminium housing and excellent waterproofing, the camera is designed to an IP66 rating, protecting the internal components from dust, dirt and liquids.

Thanks to its mobile and rugged mounting options, this camera is the ideal choice for numerous mobile surveillance applications, such as law enforcement, military vehicle surveillance, specialised robots and maritime surveillance.



- 2 MP; 33x optical zoom
- Optional thermal lens, up to 25 mm
- IP66 weather resistance
- ONVIF compliant
- Ideal for mobile surveillance, vehicles and maritime applications
- Optional thermal resolution, up to 640 × 512, high-sensitivity sensor, contrast adjustment support





EOS-971-TH625A33 Dual-lens thermal camera

Specifications

Part number	EOS-971-TH625A33
Thermal imaging	
Detector	Uncooled Vox infrared focal plane array
Sensor format/Pixel pitch	640 x 512 / 12 μ m
Frame rate	50 Hz
Response spectra	8 ~ 14 μ m
NETD	\leq 50 mK at 25 °C, F#1.0 (\leq 40 mK optional)
Lens	25 mm, F1.0
Focus type	Thermal stabilisation
Field of view	17° x 14°
Digital zoom	Continuous zoom 1.0–8.0x
Brightness and contrast adjustment	Manual/Auto0/Auto1
Polarity	Warm black / Warm white
Palette	Support
Daylight camera	
Image sensor	1/2.8-inch progressive scan CMOS
Resolution	2 MP, 1920 x 1080
Minimum illumination	Colour: 0.001 lux (F1.5, AGC on); B&W: 0.0005 lux (F1.5, AGC on)
Shutter	1/25 s to 1/100,000 s; supports delayed shutter
Aperture	DC control
Day/night switch	ICR cut-off filter
Digital zoom	16x
Focal length	4.8–158 mm, 33x optical zoom
Aperture range	F1.5–F4.0
Field of view	Horizontal field of view: 58.9–2.4° (wide-angle–telephoto)
Video compression	H.265 / H.264
Protocols	TCP/IP, ICMP, HTTP, HTTPS, FTP, DHCP, DNS, RTP, RTSP, RTCP, NTP, SMTP, SNMP, IPv6
Interface protocol	ONVIF (PROFILE S, PROFILE G)
Pan/Tilt	
Pan range	360° (endless)
Pan speed	0.05°/s ~ 60°/s
Tilt range	-20° to +90° (automatic reversal)
Tilt speed	0.05° ~ 50°/s
General	
Power supply	12 V–24 V DC, wide input voltage range; Power consumption: \leq 24 W;
COM/Protocol	RS 485/ PELCO-D/P
Video output	1 thermal imaging video channel; network video, via RJ45 1 HD video channel; network video, via RJ45
Operating temperature	-40 °C to 60 °C
Mounting	Vehicle mounting; mast mounting
Ingress protection (IP rating)	IP66
Dimensions	ϕ 147*208 mm
Weight	3.5 kg



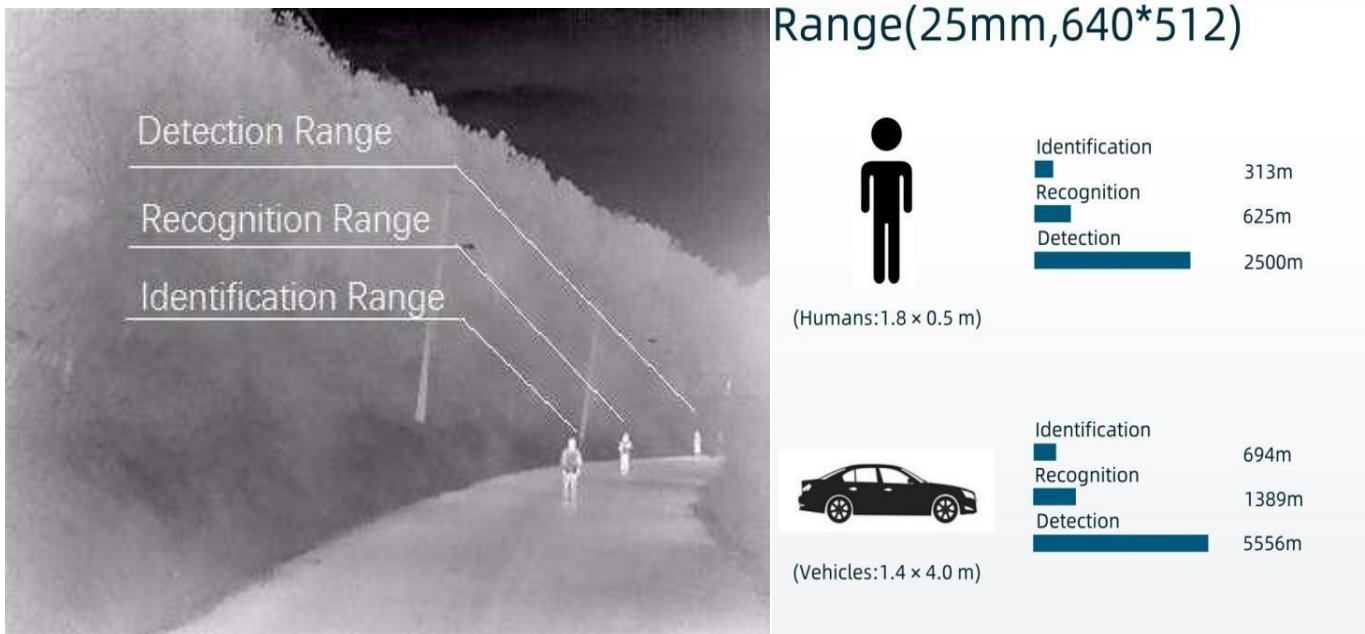
EOS-971-TH625A33 Dual-lens thermal camera

■ DRI range table

*This table is for guidance only and performance may vary depending on the environment.

*Optimal detection, recognition and identification distances are calculated according to Johnson's criteria.

Detection range: to distinguish an object from the background, it must cover at least 1.5 pixels. Recognition range: to classify the object (animal, person, vehicle, etc.), it must cover at least 6 pixels. Identification range: to identify the object and describe it in detail, it must cover at least 12 pixels



■ Typical application

Video surveillance of police cars

Surveillance of military vehicles

Maritime surveillance

Robot video surveillance

Patrol vehicle surveillance

Mining surveillance

Fire rescue camera



EOS-971-TH625A33 Dual-lens thermal camera

Available models

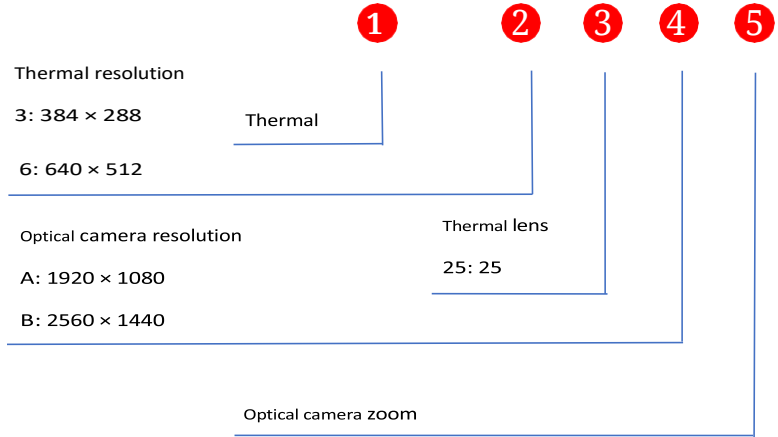
EOS-971-TH625A33

OPTIONS

EOS-971-TH319A33
EOS-971-TH325A33
EOS-971-TH619A33
EOS-971-TH625A33

MEANING OF MODEL NAME:

E	O	S	971	TH	6	25	A	33
---	---	---	-----	----	---	----	---	----



■ Dimensions (in mm)

